

Twin transition – green and digital transformation of the textile system

Jonas Larsson



SUSTAINABILITY
BY SWEDEN
THE NATIONAL PLATFORM



THE SWEDISH SCHOOL
OF TEXTILES
UNIVERSITY OF BORÅS



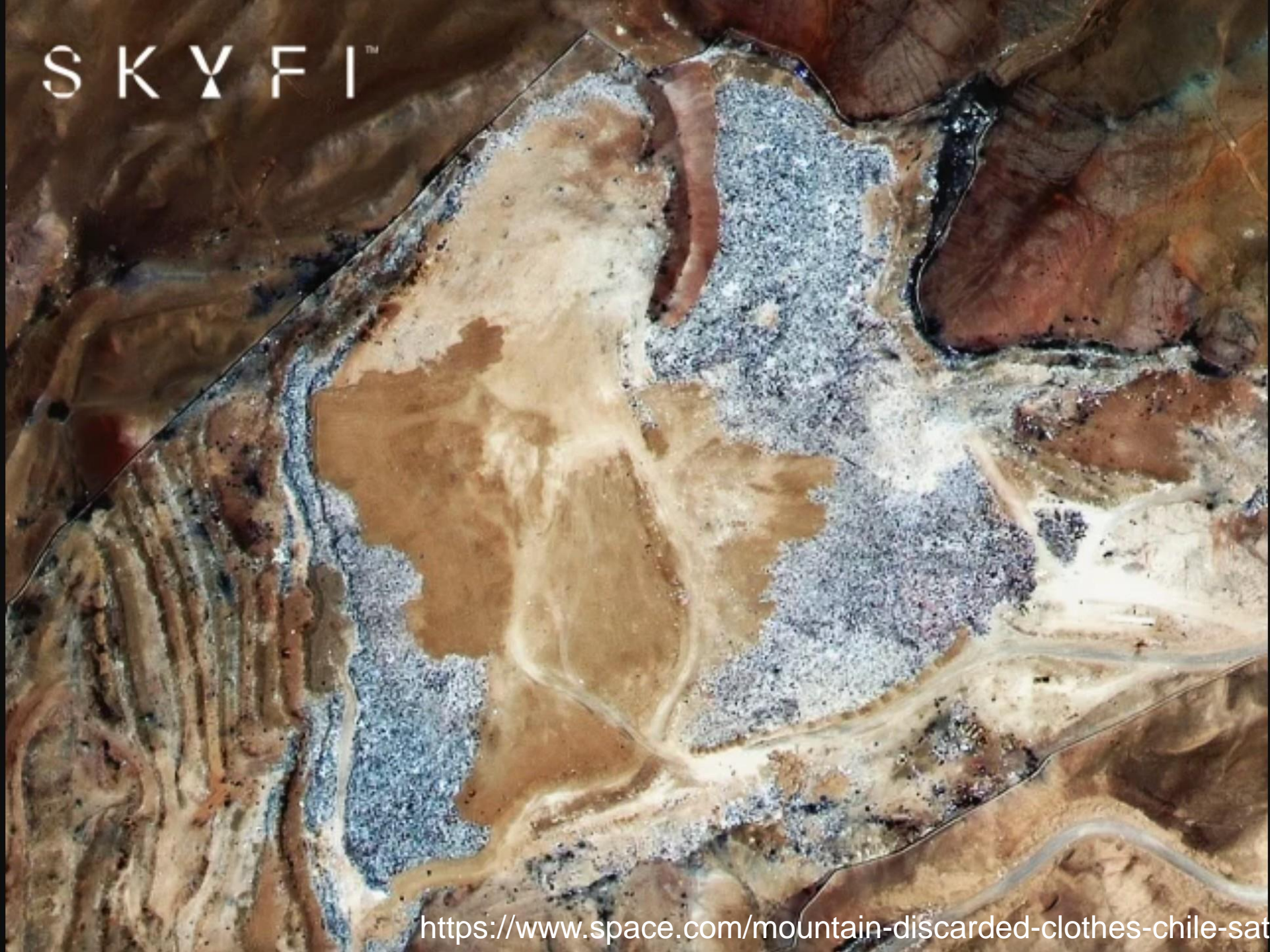
SCIENCE
PARK
BORÅS



Expression of individuality, creativity and cultural trends through clothing, accessories and style choices

<https://www.thesartorialist.com/via-santandrea-milan/>

SKYFI™



<https://www.space.com/mountain-discarded-clothes-chile-satellite-photo>



System demonstrator for a
more sustainable textile system



Circular Design Principles



	Before use	During Use	After Use
Circulate materials and products by designing them to be kept in use, and at their highest value, for as long as possible			
Eliminate waste and pollution through design			
Regenerate nature by designing to improve local biodiversity, air, and water quality			

Impact goals

- At least 80 % of product has recycled materials, regeneratively grown materials or better material
- 100% of products are designed in conformity with the circular design strategies
- At least 80% of material is traceable to raw material, through all its use cycles and to material recycling

Circulate



Activate your closet – talking garments



Hey, I've been sitting in your wardrobe for the last 6 months 😊. Don't you love me anymore? 😊

K, you want to sell me?

There is actually one who is willing to pay 40€ for me at Ebay, should I sell me?

Can Hugo pick me up tonight?

Great, pick up at 8 pm 🙌

It's not you it's me, I've changed and we are not a match anymore.

Yeah, you'd be better off with someone else

Yes

Yes, at 20 00



Eliminate

Create your avatar

The first step is to create a model of your body to fit the garment on. If you don't have your measurements, you can just input your length and body type.

Gender

Male

Female

BodyType



How to measure

Adjust measurements

Body Length	<input type="range"/>	184
Arm Length	<input type="range"/>	88
chest	<input type="range"/>	104
Waist	<input type="range"/>	92
Hips	<input type="range"/>	107

Looks like you now?

Continue

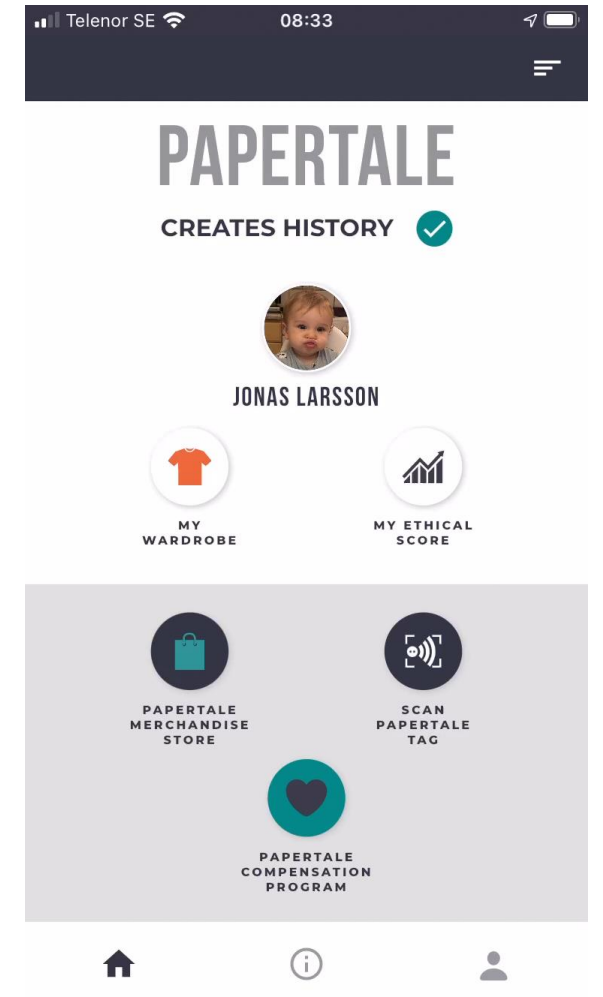


Dye On-demand



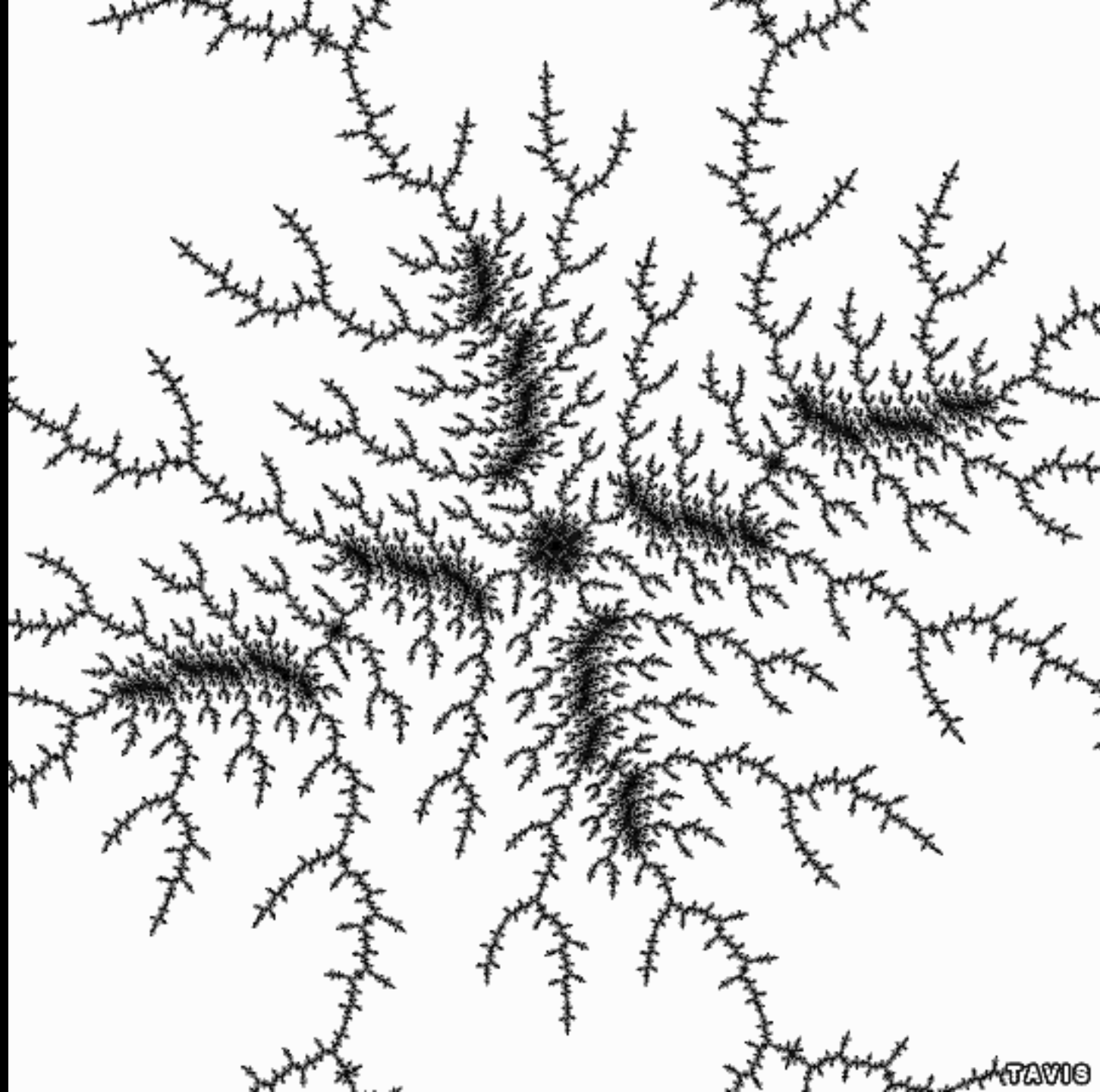
Transparency & Traceability

gina • lab



Black box for Transparency & Traceability





TAVIS

Regenerate



Biospheric Design

Guiding principles

- Use substances from Earth's surface
- Ensure that substances created by society can return safely to nature
- Enable prosperity for all
- Full transparency





Jonas Larsson

Associate professor in Textile Management /
Board member



Tack!